

Wittrock Crane Trading



all terrain cranes • mobile cranes • crawler cranes
lifting platforms • fork lifts • telehandler • construction machines

Technical data sheet

Basic data

code
manufacturer
model
year / 1st registration
max. load capacity (75%)
crane type

carrier

manufacturer
engine / kW / hp
gear box
kilometre
hours
drive
tires
extra equipment

superstructure

manufacturer
engine / kW / hp
hours
main boom
swing away jib
fixed jib
luffing jib
winch(es)
hook block(s)
counterweight
extra equipment

location / delivery term
delivery time

Technisches Datenblatt

Stammdaten

Referenz UW5500
Hersteller Sennebogen
Typ 5500R-SL
Baujahr / Erstzulassung 04.2009
Max. Tragkraft (75%) 180t
Kranart crawler crane

Unterwagen

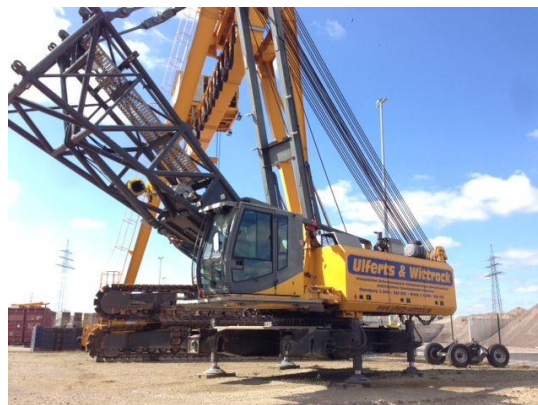
Hersteller Sennebogen
Motor / kW / PS Caterpillar C9 Acert, 261kW / 355PS, Tier III
Getriebe ---
Kilometer ---
Betriebsstunden ---
Antrieb ---
Reifen crawler shoes 1.200 mm width
Sonderausstattung self mounting system, air condition and hating comfort tiltable driver cabin, electronic load limited system

Oberwagen

Hersteller Sennebogen
Motor / kW / PS ---
Betriebsstunden 7.322 (04.2020)
Hauptmast 80,3m (SHLH) / 74,7m (FH)
Klappspitze ---
Feste Spitze runner 2m, 24t
Wippbare Spitze SH / WS 52,30 + 41,10m
Winde(n) 2 x 120kN
Hakenflasche(n) 1 x 80t (3-sheaves), 1 x 40t (1-sheave)
Kontergewicht 60t + 24t (full)
Sonderausstattung GSM service modul, rope retracting winch, diagnostic system SDS

Standort / Lieferbedingung
Verfügbarkeit

EXW location Germany
on request



Alle Angaben ohne Gewähr. Angebot freibleibend, Vorverkauf vorbehalten.
Errors and omissions excepted, subject to modifications and amendments. Without warranty, subject to prior sale